

GALLERY B·R

# OK COMPUTER

A COLLECTION OF  
WORKS BY BENKA

#CAPTCHA289 by BENKA, 2023



Named after Radiohead's prophetic 1997 album, *OK Computer* positions BENKA's work within a lineage of cultural critique that questions the accelerating pace of digital life. Like the album, his paintings explore a world suspended between advancement and anxiety—where technology promises progress whilst altering the core of human experience.

At the heart of BENKA's practice is a fascination with artificial intelligence and its creeping integration into our daily lives: from the digitisation of social interaction to the eerie familiarity of humanoid robots and omnipresent surveillance systems. His signature use of captchas—distorted combinations of letters and numbers used to distinguish humans from machines—becomes a metaphor for this shifting boundary. In BENKA's hands, they are not just security devices but symbols of resistance and fragile identity in a world increasingly governed by algorithms.

The exhibition pairs a new series of stark, black-and-white compositions with a vibrant retrospective of earlier works, revealing the evolution of an artist deeply engaged with the question of what makes us human. Influenced by the gestural freedom of 1950s informalism, BENKA works at the intersection of abstraction and code. He is painter, mathematician, and alchemist—balancing intuition and structure, chaos and control.

To approach BENKA's work is to access a new space of knowledge, to discover the alphanumeric code that opens the safe where sensibility and the search for pure art nest. *OK Computer* invites us into that space: one where the logic of machines meets the irreducible complexity of the human soul.

## OK COMPUTER











#CAPTCHA324, 2024 with Half Box Chair by Rick Owens





#CAPTCHA289, 2023 with Triennale Light model 12128 for Arredoluce, by Angelo Lelli, c.1947  
#CAPTCHA330, 2024 with Table for Cité de Refuge by Le Corbusier, c.1929





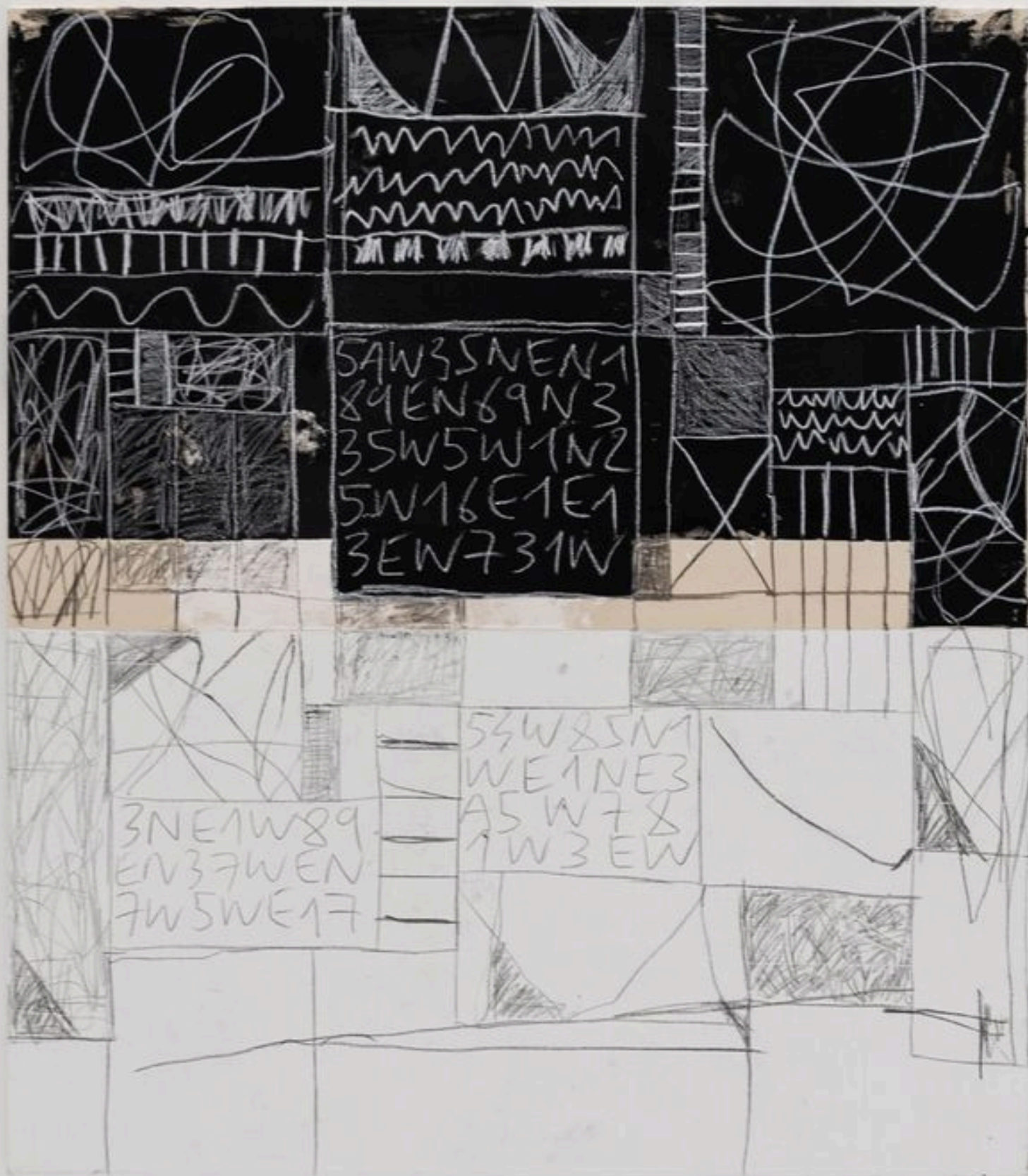




#CAPTCHA330, 2024 with Table for Cité de Refuge by Le Corbusier, c.1929

#CAPTCHA323, 2024





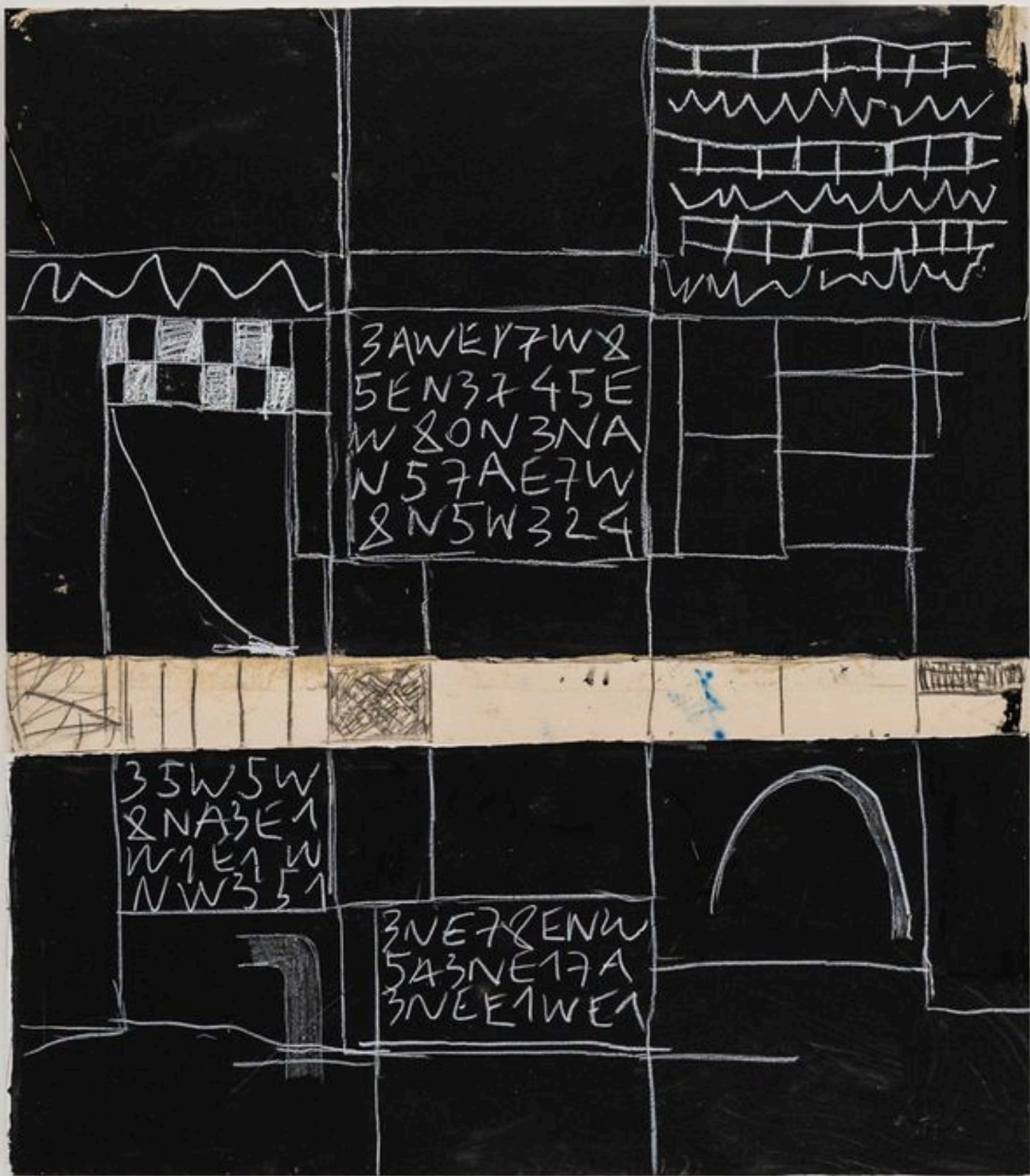
CAPTCHA #324, 2024

BENKA

Acrylic, crayon, graphite on canvas, sewn together

160 x 140 x 3cm | 63 x 55 1/8 x 1 1/8 in





CAPTCHA #320, 2024

BENKA

Acrylic, crayon, graphite crayon on canvas, sewn together

160 x 140 x 3cm | 63 x 55 1/8 x 1 1/8 in





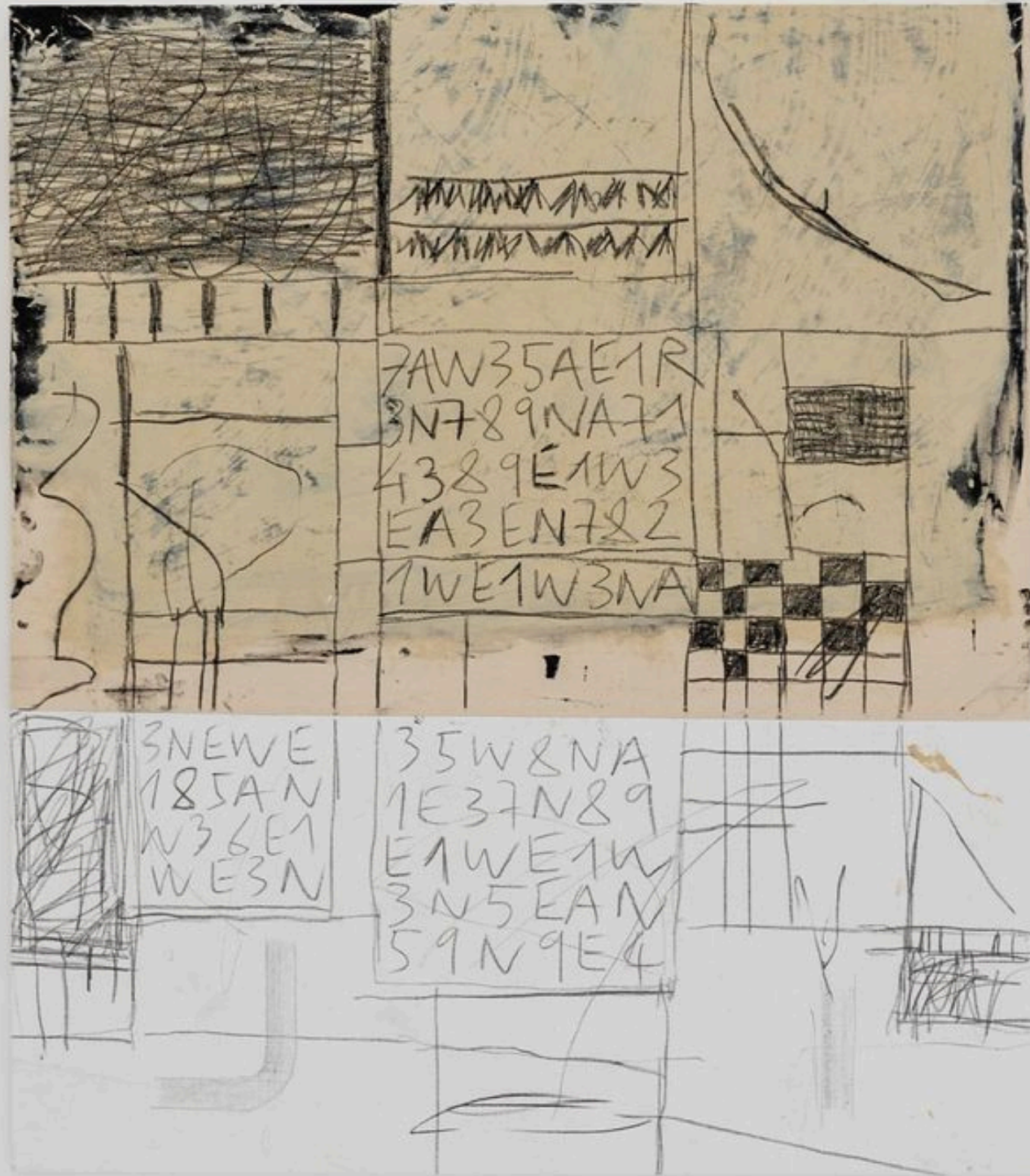
*CAPTCHA #289, 2023*

BENKA

Mixed media

180 x 140 x 3cm | 70  $\frac{7}{8}$  x 55  $\frac{1}{8}$  x 1  $\frac{1}{8}$  in





CAPTCHA #323, 2024

BENKA

Acrylic, crayon, graphite on canvas, sewn together

160 x 140 cm | 63 x 55 ½ in





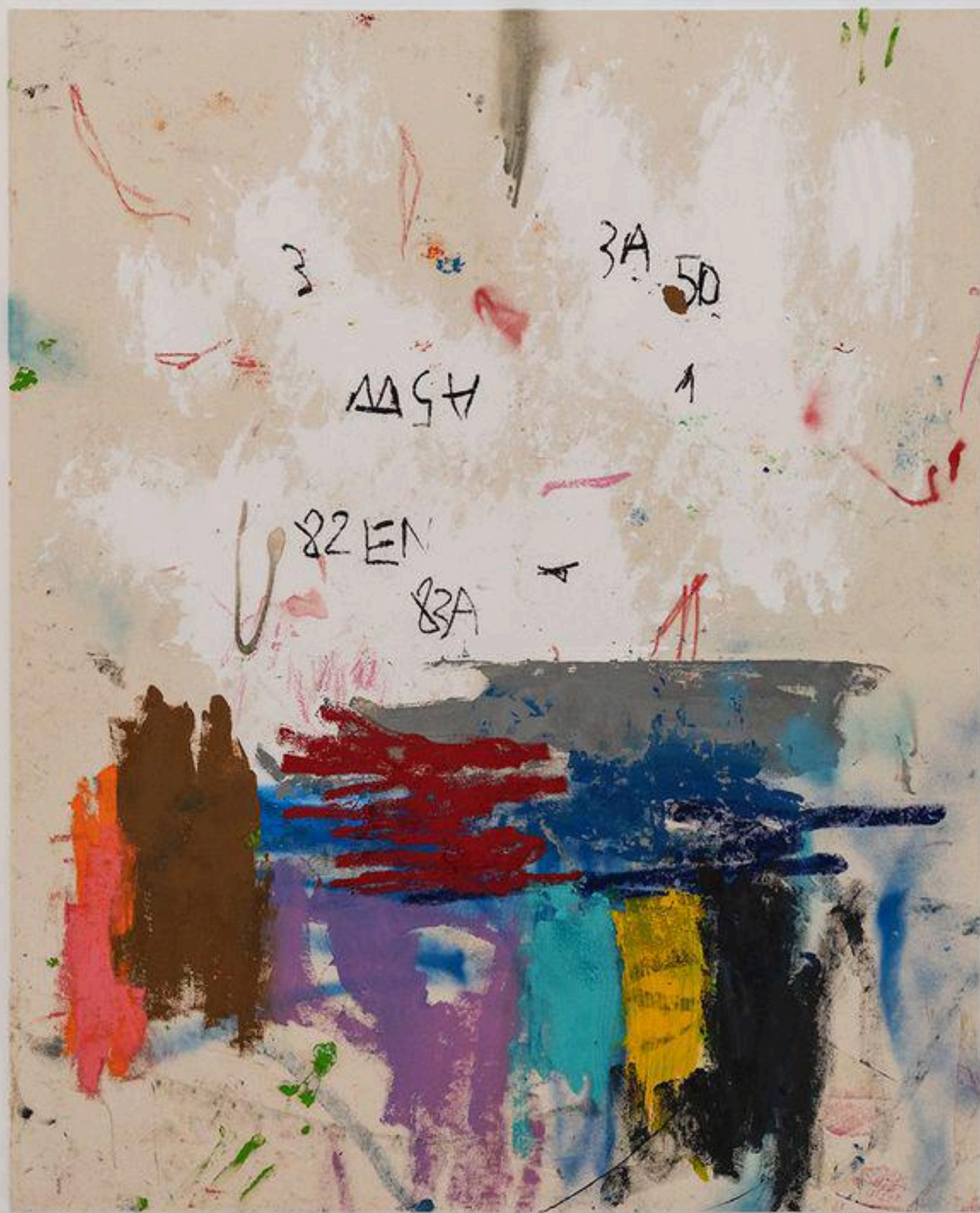
CAPTCHA #330, 2024

BENKA

Acrylic, crayon, graphite on canvas, sewn together

130 x 110 cm | 51 ½ x 43 ¼ in





*CAPTCHA #222, 2022*

BENKA

Mixed media

180 x 140 x 3cm | 70 7/8 x 55 1/8 x 1 1/8 in





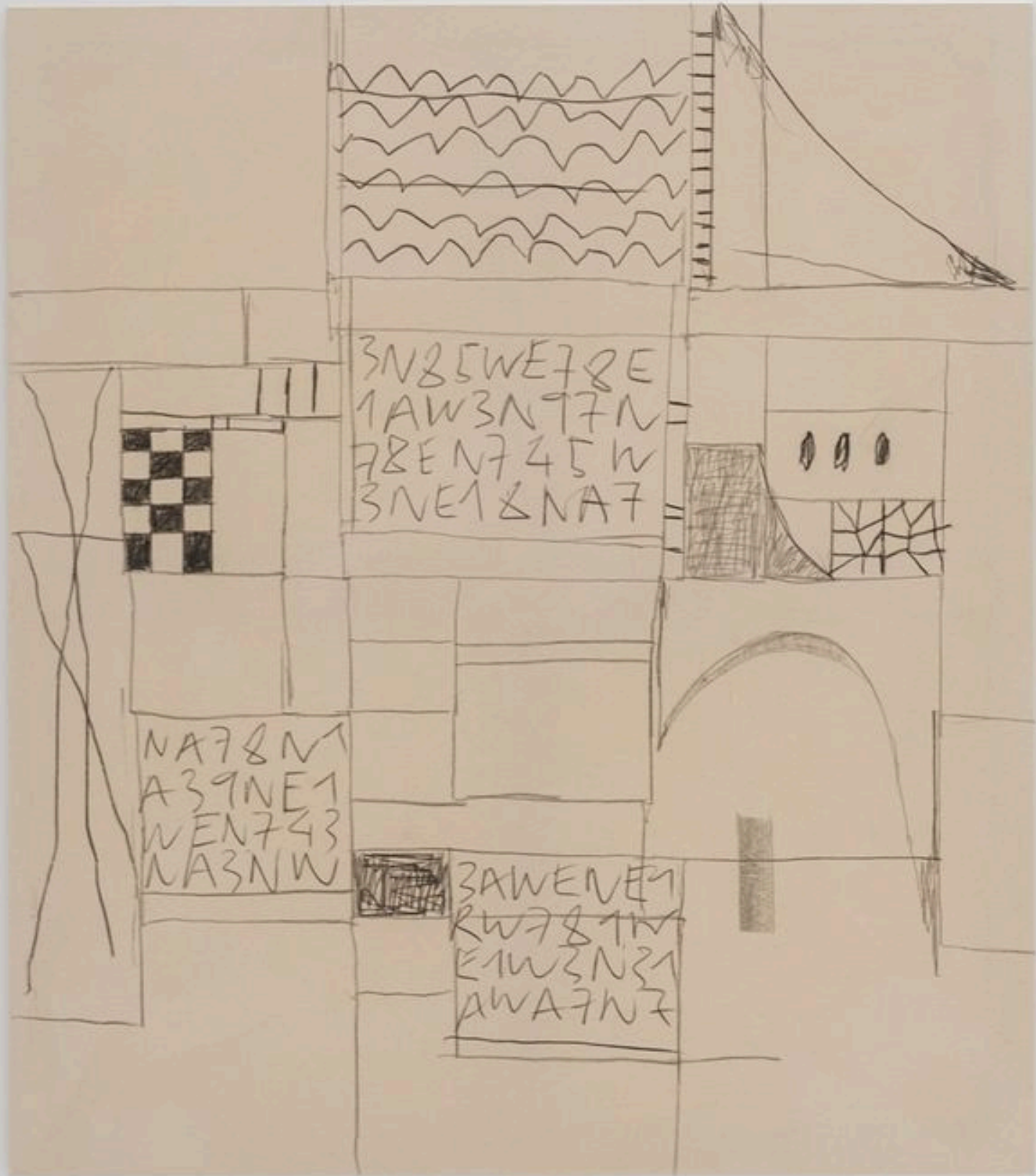
CAPTCHA #329, 2024

BENKA

Acrylic, crayon, graphite on canvas, sewn together

130 x 110 cm | 51 ½ x 43 ¼ in





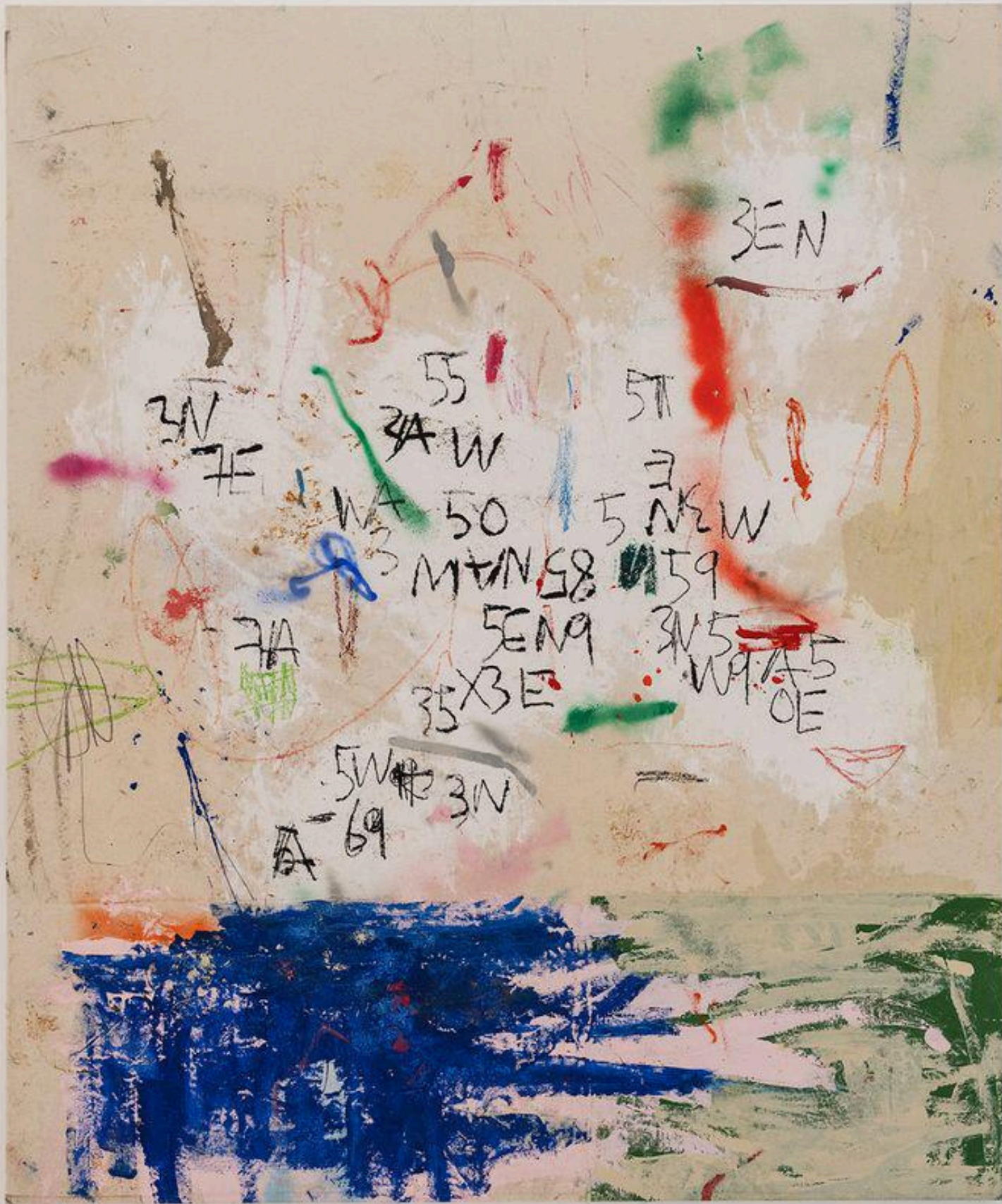
CAPTCHA #323, 2024

BENKA

Acrylic, crayon, graphite on canvas, sewn together

160 x 140 x 3cm | 63 x 55 1/8 x 1 1/8 in





CAPTCHA #191, 2023

BENKA

Mixed media

180 x 140 x 3cm | 70 7/8 x 55 1/8 x 1 1/8 in



GALLERY B·R

SVL+8E  
V3N97N  
N745W  
E1&NA7

Please direct enquiries  
to [info@gallerybr.co.uk](mailto:info@gallerybr.co.uk)

3AWEVEN  
R1W201W

33 Long Street, Tetbury  
Gloucestershire, GL8 8AA